



Alternative models 7326: Rise of the Sphinx



Text by car_mp

Pictures by LEGO® Systems A/S and car_mp

Set: Rise of the Sphinx
Set number: 7326
Number of parts: 527
Minifigs: 3
Recommended Retail Price: 49,95€

Once again we recover this irregular section in which we present some modest thoughts on the potential of LEGO®, if we were to have only one set at our disposal. In this case we have a look at a set of the Pharaoh's Quest line, the 7326 "Rise of the Sphinx".

The official model is quite interesting and especially very playable, with a vehicle, a secret chamber and a sphinx that can get up and stand. Regarding the colors of the parts, it has plenty of tan and dark tan. As for variety, it has many "slopes",



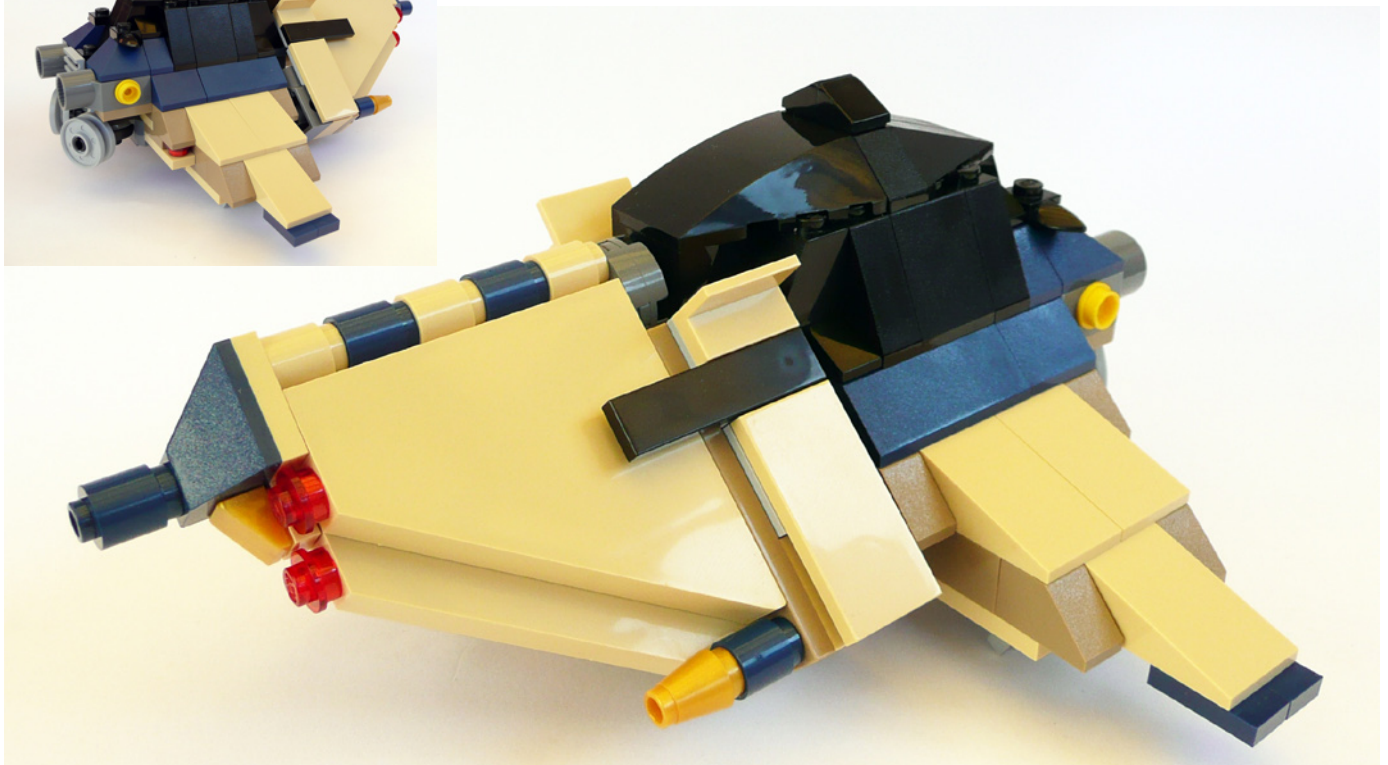


including colors like dark red or dark blue, and enough small plates.

The first model emerged from the 4 giant tan slopes that the set brings. They are well suited to the closure of a gable roof. However I was surprised at how little grip these pieces have. In the end I built a small mountain hut with a "classic" minivan.

The second model was created trying to exploit the wealth and diversity of hinges that the model brings, and it is a small "mecha" with a certain "classic" look, provided by the grill. Both the dark red and the dark blue parts are very useful to combine with colors such as gray or tan.

The third model emerged accidentally, starting again from the



tan slopes. It is a small spaceship. The hardest thing was to get the rotation between the cockpit and nose, achieved thanks again to the large number of hinges. Although not shown in the photos, the landing gear is built with the legs of the minifigs from the set.

I hope you enjoy them.
Until next time

Gracias a: LEGO® Iberia S.A. por el set y las imágenes oficiales.

Acknowledgements: LEGO Iberia S.A., Joachim Schwidtal and Rosa Seegelken for the set and official images.

#