



## Review: 75917, 75918 and 75919

By HispaBrick Magazine®

Pictures by Brickset and The LEGO® Group

Dinosaurs have been on the LEGO catalog on different themes over the years. A quick search of the word “dino” in the fantastic Brickset database gives us a clear idea of the great attraction that dinosaurs have on the smallest of the house.

There are some 90’s sets with references to the world of dinosaurs, but it is on year 2000, with the “Adventurers” series, when they take a greater role. The dinosaurs are quite schematic in design and with a fairly simple decoration.



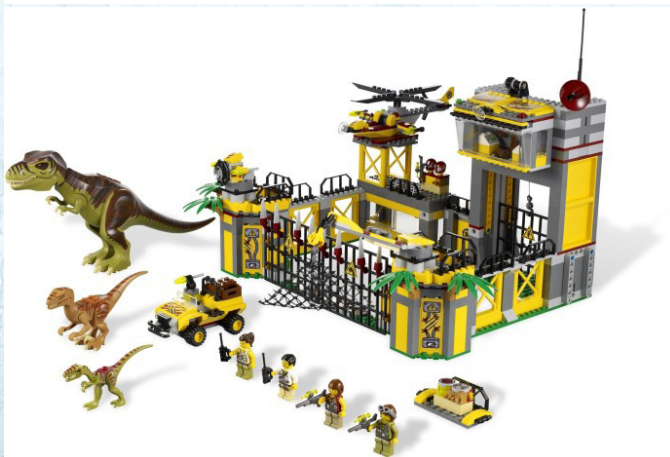
In 2001 there are a number of small boxes and polybags called “Dinosaurs”. Each set included a “baby” dinosaur (made of a mixture of building bricks with others special molded bricks for the most characteristic features of each dinosaur) or an adult dinosaur (made entirely with dedicated parts). Each dinosaur could become three other models. Also, within the “Studios” theme, a few sets dedicated to “Jurassic Park III” appeared in the same year.



After some polybags in 2004, in 2005 the “Dino Attack” theme arrived, with vehicles and highly modernized dinosaurs. There was also a limited edition of this theme called “Dino 2010”.



In the years 2007 and 2008 Duplo and Creator took advantage of the pull of the dinosaurs, until the “Dino” theme reappeared in 2012.



A collectible minifig in 2014 was the bridge to the new theme launched this year 2015, “Jurassic World”.

“Jurassic World” is based on the movie of the same title. This is the fourth movie of the Jurassic Park series and will premiere this coming June. The male protagonist is Chris Pratt, curiously in no time he has managed to have no less than three minifigs, Emmet from The LEGO® Movie, Peter

Quill from The Guardians of the Galaxy and Owen from this dinosaur’s movie. As the film is pending release we know little about it, so we will concentrate on some of the sets of this new theme. We should note that although it is based on a movie, and is therefore very likely to be a one year theme, a fifth movie of the saga has been announced, so it could have some continuity.

Thanks to LEGO Iberia we have had access to the 75917, 75918 and 75919 sets.

## Review 75917 Raptor Rampage

By car\_mp  
Pictures by The LEGO Group

Waiting to see the film and to find out if the sets corresponds to a particular scene, it seems to represent a chase in which two Velociraptors, a Unimog type truck and a motorcycle are involved. The set includes three minifigs (Owen, Claire and a security guard) and two Velociraptors (Blue and Delta).



The main build of the set is the truck. Its external form has some similarity to a Unimog and its rear cabin carries a small laboratory. It is also equipped with a small turret that can be placed on top of the truck or stored in its rear. A small technic structure is the basis of the vehicle. After the structure, you build the cabin and finally the laboratory, which can be separated from the rest of the vehicle. The build has no difficulty and the result is visually satisfying. It would have been perfect if the vehicle had some kind of suspension, the cabin allowed two occupants easily and the bottom had a little more detail. The plates on the bottom side give the impression that the designers ran out of parts for detailing them a little better. Inside the lab there are a couple of computers and guides that allows the turret to be fitted inside. The turret includes one of the new shooter systems and also a piece to place on its lower part as a tripod.

The Velociraptors come disassembled and each piece in a single bag. They are beautiful, detailed and can move their legs and jaw. The color and the pattern of the skin is different in both dinosaurs.



The bike is dark green and resembles its counterpart in the film as can be seen in an official photo.

The minifigs include the two main characters of the film (apart of the dinosaurs, of course) which is always a point in favor. The third is a security guard, but I do not know if he is important in the film.

I think the playability of the set is very high. The two vehicles and the two dinosaurs can give countless hours of gameplay. The truck can be modified to create an attractive model for AFOLs, although its size is a bit out of the normal range of CITY. Ultimately I think it is an interesting and set for children due to its playability.

## Review 75918 – T-Rex Tracker

by *Jetro*

Pictures by *Jetro and The LEGO Group*

Parts: 520

Minifigs: 3

Dinosaurs: 1 – T-Rex

The 75918 T-Rex Tracker is the second largest set in the new Jurassic World theme. To be quite honest I liked the first Jurassic Park film, had a good laugh watching the second in a local cinema and never saw the third instalment of the series, so I am not particularly looking forward to the new film. I also didn't find the box art on the front to be very inspiring – it's a poorly executed Photoshop job: a vehicle that size could have never passed between those closely packed trees, let alone follow a large, running dinosaur. But let's put those initial misgivings aside and focus on the contents.

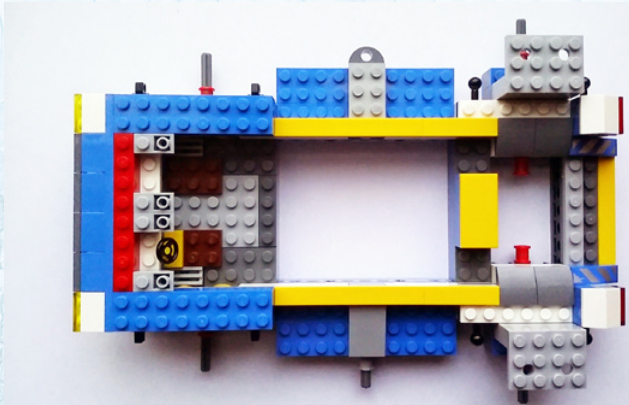
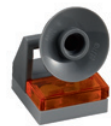
Inside the box you will find 4 numbered bags, 4 large tires, 2 instruction booklets and a bag containing the parts of the

T-Rex, each in its own separate compartment. Independent of what the booklet mayor may not say, unless you first get out your white gloves and cover your mouth to avoid sullyng the bricks you will likely tear open this last bag and start assembling T-Rex. Despite the fact that it consists of mostly DUPLO-sized parts it is actually a very nicely detailed and posable figure. Its large feet can be easily attached to a plate (or the bottom of the cage it will be held in) and the movement of the head and jaw and even the short arm give it a lot of playability.



In addition to the dinosaur and a blue motorbike, the remainder of the 520 pieces are used to build a single vehicle. If you are going to transport a T-Rex in a cage you are going to need a serious, sturdy vehicle. The start of the build reminded me very much of some of my Technic sets from 20 years ago, with the notable difference that apart from the wheels there are no moving parts. The vehicle is actually quite nice and the large Technic wheels fit very well with the overall size of it. There are only a few stickers and they add some nice details (like a computer screen) without marking too many parts for single use.

On one of the sides of the vehicle there is a ball joint to mount a kind of cannon. This uses a new launch piece that



looks like a 1x4 brick with a through hole on the short sides. This will hold the trans-green harpoon that can be seen on the box. To avoid the harpoon flying too far (and to trap the T-Rex) it is attached to a piece of string that is wound around what looks like a kind of aiming/guidance system (although to me it looked more like an accident waiting to happen). The spring loaded shooter works nicely, but winding the string around the bases is a bit of a nuisance. As a side-effect of using large technic tires, the vehicle appears to have suspension (due to the flexibility of the tires).

On top of the vehicle a cage for the T-Rex can be placed. This cage consists of a plate base to which Technic beams and axles are attached, allowing the cage to be opened and adapted to the shape of the T-Rex. It incorporates a nice mechanism to open the sides, but also the top of the cage, as can be seen in the images on the back of the box.



To finish the set off there are some “accessories” in the shape of some tracking equipment and a box with tranquiliser darts – lime green syringes from the Friends theme – and a long pole with a trans blue top that appears to be some kind of tazer/cattle prod.

So what's the final verdict? Well, despite my initial misgivings, the dinosaur is cute, the vehicle and cage combo works and the combination makes for lots of play opportunities.

One final anecdote – my kids helped me build the set and were delighted to see the flesh coloured heads and hands of the minifigs. “Finally LEGO® has realised people are not yellow” – this is the beginning of the end!

## Review: 75919 Indominus Rex Breakout

By **Iluisgib**

Pictures by **Iluisgib and The LEGO Group**

Parts: 1156

Minifigs: 4

*“Twenty-two years after the events of Jurassic Park, Isla Nublar, an island located off Central America’s Pacific Coast, near Costa Rica, now features a fully functioning dinosaur theme park, Jurassic World, as originally envisioned by John Hammond. This new park is owned by the Masrani Global Corporation, but attendance has been declining due to the lack of new attractions. Owen Grady, a member of the park’s on-site staff, conducts behavioral research on a group of Velociraptors, known as Blue, Charlie, Delta and Echo. At the corporation’s request, the park’s geneticists create a genetically modified hybrid dinosaur, known as Indominus Rex, to boost visitor attendance, but it breaks loose and runs wild throughout the park, forcing the staff to consider extreme measures to stop it.”*

The Indominus Rex Breakout set is the flagship set of the film. It includes the genetically modified dinosaur, the Indominus Rex, a high security fencing, a helicopter, a terrestrial vehicle and 4 minifigures.

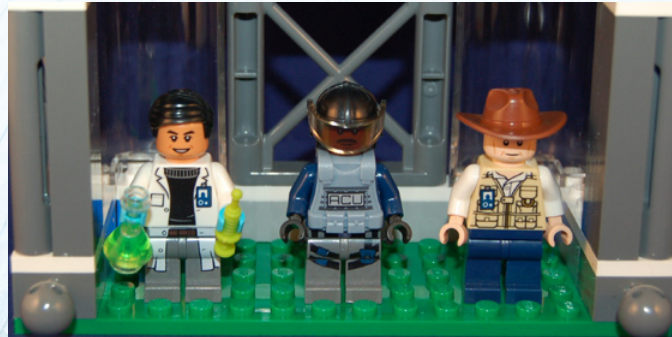
There are 12 numbered bags and the dinosaur in a different bag. Once you open the box, you first go to the dinosaur and build it, even if you have not opened the instructions bag.



The Indominus Rex is a dinosaur with the same size of the T-Rex, but its colour is different, as well as the claws, the teeth and some other minor details. The head is fully articulated. The hands, arms, legs and tail also have movement. The dinosaur can catch a minifigure in its hands. I have nothing bad to say about the dinosaur. It's really well done!



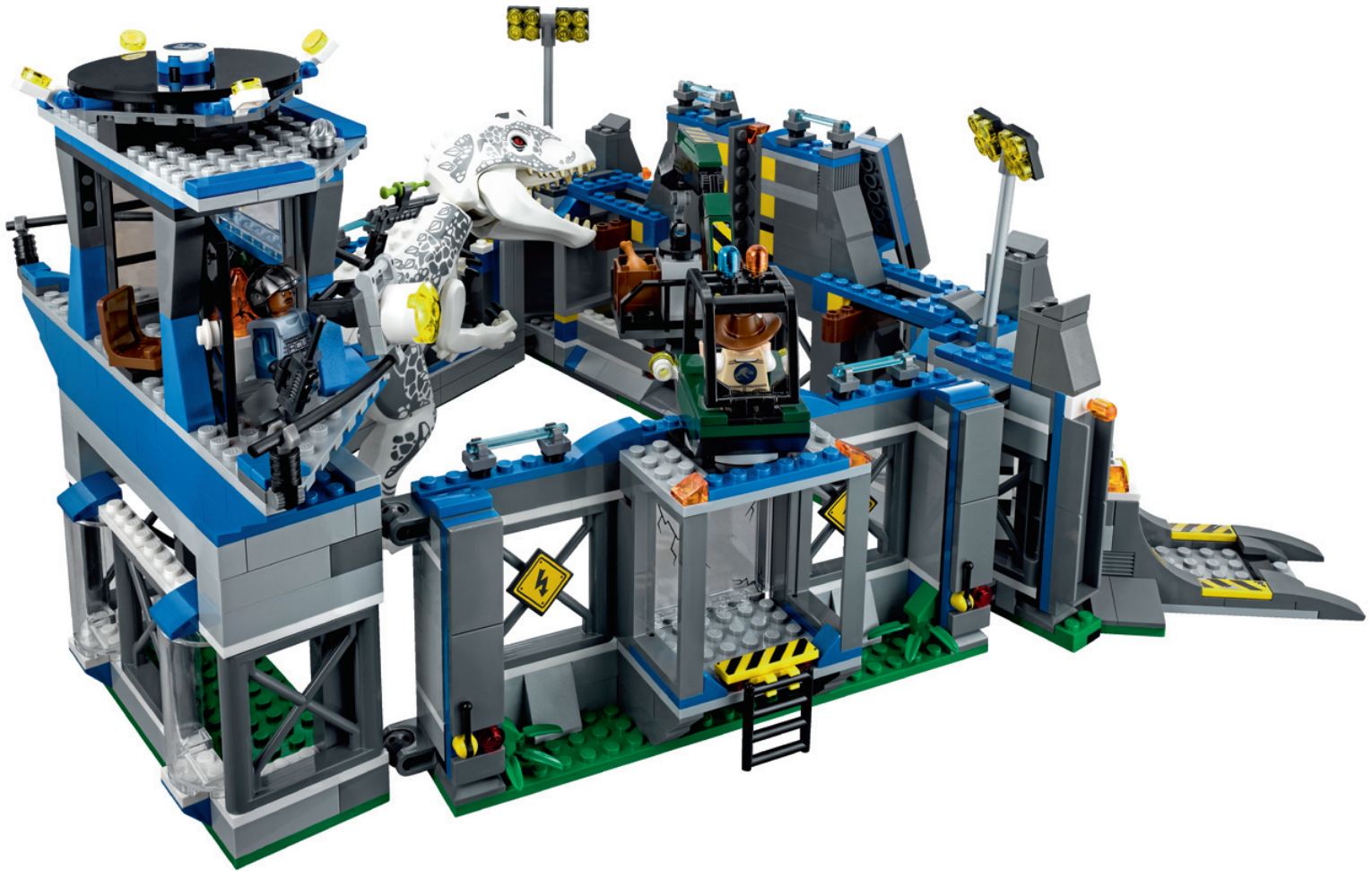
The 4 minifigs in the box are Dr. Wu, Zach, Vet and one member of the Acu (Asset Containment Unit). They are 4 of the 10 characters reproduced by LEGO. The torsos have special decoration and the quality of the print is great, as always. Two of them, Dr. Wu and the Acu member, also have print on the legs. Moreover Dr. Wu has gloves on his hands, in a light blue colour. With those gloves he can work in his laboratory, with the test tube and the amber with a mosquito inside, both included. Zach has two expressions on his face. One smiling and the other scared, when he is escaping from the dinosaur.



There are two vehicles: a helicopter and a kind of “ball” with a seat inside. It can roll along the jungle and the character inside is protected against the environment and the dinosaurs.

The helicopter is small. It's only possible to fit one minifig and 2 missiles. Those missiles have a green head. It could mean that it's something to make the dinosaur sleep, like a giant dart.

The “ball” is a very interesting vehicle. It's made with 4 parts, two half spheres (new part) and two radar dishes on the sides. There is a seat inside to place the minifig. With a small number of parts, the seat is attached to the half spheres and it stays horizontal when the ball rolls. You should be careful when building this small seat because if you don't put the technic axles exactly in their place, the seat does not move freely, and then it turns with the ball.



Unfortunately, this is the end of the interesting parts of the set. The rest of the set, the fencing, is boring. In my opinion, it's not a building challenge, even for a kid. I expected some more playability and complexity in that part, because this set is supposed to be the flagship of the franchise. The only interesting part of the fencing is one of the corners, because there is a small launcher for the ball, which gives some playability. Besides this, there's only a small crane, to deliver the food to the dinosaur, a wall which can be "broken" so the Indominus Rex can break out, and the main door. The building is repetitive, although each part is not exactly the same as the others. When you have

finished the second module of the fencing, you know what is coming next. There is a small laboratory in the head of the fencing where Dr. Wu is doing the genetic experiments with dinosaurs. The level of detail is poor. There's only a computer, a cup, a table and a chair. I expected some more stuff inside a high-tech laboratory. On the roof there is a heliport.

To connect all the modules of the fencing, there are some ball joints, and it's easy to attach and separate to store the set without occupying too much space.

Other sets of the same size offer a lot of playability and it has been surprising for me that this one doesn't. I expected some more functionalities and detailed design, but I suppose this would increase the price of the set to an unreachable level.

I have mixed feelings with this set. On the one hand there is some cool stuff, like the dinosaur, the ground transporter, the quality of the minifigs and some small details. On the other hand I found the fencing and the laboratory poor for a set of this level.

Kids love dinosaurs and this is the set with the main "animal character" of the film. This will make the set desirable. I am not sure if they will get bored when building the fencing. Perhaps it's only my feeling as AFOL. Anyway, there's enough stuff to have a nice building and playing time, especially if you combine this set with other sets of the franchise. Then you will have some dinosaurs and you can create your own Jurassic World.

Thanks to LEGO® Iberia and Achim Schwidtal.  
#